



# PRODUCT GUIDE

## FLOOR COVERING INSTALLATION







Kiesel's headquarters and production plant is located in the Neckar Valley in South-West Germany. In the neighborhood of the headquarters of companies like Daimler, Festo Tooltechnic, Porsche, Putzmeister or Stihl, Kiesel is dedicated to produce reliable, easy to use and environmental safe installation systems.



INDEX	
Kiesel philosophy	3
High tack from the start	4
Preparing the substrate	5
Patching and levelling compounds	9
Adhesives for elastic floor coverings	14
Conductive adhesives for elastic textile floor coverings	18
Adhesives for textile floor coverings	18
Adhesives overview	19
Accessories	20
Installation procedures	22
Tabular overview	24
Notch blades	26
Reference objects	27

# DEAR BUSINESS PARTNER!

**“Kiesel, key to quality installation”** that is our promise for a real partnership. As one of the technological leading manufacturers of complete installation systems for textile and resilient floor coverings, wood flooring and ceramic tiles and natural stones, we are a competent partner for installers and affiliated business with 60 years of experience.

**“Kiesel, key to quality installation”** is the expression of a straight-forward philosophy. It means, that we are one step ahead with advanced installations systems and set standards for innovation, performance and reliability. Our core business is the development and production of installation materials for the flooring and wood flooring industry. We concentrate our efforts on this field to provide competent answers on a highly demand job.

**“Kiesel, key to quality installation”** is our mission to deliver well-engineered, reliable products to a marketable price to make installation work easy, reliable and environmental friendly.

**“Kiesel, key to quality installation”** is also the expression of our commitment for a mutual and loyal partnership with our business partners. We provide high quality products backed up by a competent Technical Service Department and committed marketing people.

Our company and our products stand for innovation, reliability and superior quality. It is our commitment to build a strong relationship with reliable, high quality products for installers, retailers, distributors, floor covering manufacturers and consumers.

We want to support your success in today's demanding markets.

Let's start together!



All important information directly on the construction site. Introducing, the **free Kiesel app** on the road!

Being successful has a lot to do with passion, with believing in your employees, your products and your customers.

At Kiesel, we work with that spirit.

## ■ Believing in Technology & Quality

We are proud of being able to set the standards by means of our innovative technology. We develop and produce at our plant in Esslingen. Our R & D department and our Technical Service Department are in close contact to incorporate installer's requirements and recommendations into the development of new and advanced products.

Producing in-house has many advantages. We are in close proximity to producers of main raw materials: cement and polymer dispersion powders, some of the best quartz sand and deposits of natural lime stone are available.

Having the best raw materials available, working with a competent and dedicated team at our R & D department, Technical Service Department and Production enables us to produce products of finest quality.

Our state-of-the-art products are designed to make installation work faster, easier and safer. They put the installer in a position to offer flexible, reliable installation for today's building sites. Needless to say, our products pass and exceed some of the most demanding standards for installation materials.

## ■ Believing in Training & Education

Floor installation today is a demanding job. Tight schedules, new flooring materials and the growing demand for ecological sound materials require installers with knowledge and skills.

To qualified customers we provide:

- seminars and training at our Technical Service Department "DenkFabrik"
- worldwide training through our Technical Service Department.

## ■ Believing in Customer Service

The customer is the focal point of all our activities. Only satisfied customers can guarantee the long term success of our business.

It is our goal to support you for careful, skillful installation and the proper implementation of Kiesel materials as much as we can. We provide:

- customer support via telephone, email-hotline and personally at the building site
- clear and precise information and processing procedures on the packaging or technical datasheet.

## ■ Believing in Arts & Craft

Historically, Arts and Crafts are closely connected. At Kiesel, we pay homage to this tradition by offering materials which enables the installer to create work of intrinsic artistic value. For example, walls decorated with ServoArt® and glass mosaic installed with Okapox DesignerGrout combine the trade of handcraft with the world of art.

We devote ourselves to Arts & Crafts in other fields, too. We commission the work of young artists to inspire the architecture of new buildings at our plant and we are buying art from local artists to support their work.

## ■ Believing in environmental responsibility

At Kiesel we believe in doing business in a responsible manner. We were one of the first manufacturers in Europe to produce solvent-free, polymer based dispersion adhesives for textile and resilient floor coverings. We replaced solvent-based wood floor adhesives by environmental friendly dispersion systems to significantly reduce VOC-emissions from floor installation works.

We utilized light filler material made from recycled glass and use alpha hemihydrate gypsum, a by-product from desulfurization systems from power stations.





# HIGH TACK FROM THE START

The correct preparation of the substrate is the right start for a successful installation job. Unfortunately, work schedules very often do not allow much time for performing this task.

Kiesel provides a very versatile selection of surface preparation products to deal with almost all of today's job-site situations in a reliable, time-saving and economical manner. These materials help at this crucial step of installation, providing extremely fast setting characteristics with outstanding workability and a reliable performance even under most demanding circumstances.

They can save you time, money and give you extra peace-of-mind.

## ■ Time saving

To virtually watch the primer drying is a profitable experience. Quick drying means that you might save an extra trip to the construction site and offer an "install-in-one-day" service. That's why we developed Okatmos® EG 20. This acrylic dispersion primer with a drying time of 20–30 minutes is probably the fastest on the market.

## ■ Reliability

Priming the substrate before applying levelling compounds serves a specific purpose:

- to improve the bond strength between mortar and substrate, especially on non-absorbent substrates
- to conduct a well balanced curing by avoiding "burn-out" of cement-based products on highly absorbent substrates
- preparation of difficult to adhere substrates.

## ■ Versatility

Old tiles, terrazzo, wood and gypsum screed: Okatmos® EG 20 is the one product for almost all sound and clean substrates. With its own antimicrobial protection it prevents the development of odors and is ideal for renovation projects.

## ■ Health

Considering your health as one of the most important aspects, we developed Okatmos® EG 20. This uncompromised water based solvent-free product has the same performance as the old unhealthy systems.

## ■ Problem solver

High water content, for example in below-grade surroundings, can be stopped with Okapox GF as a moisture barrier.

Even our epoxy primer Okapox GF meets the Emission Code EC 1 Standard for lowest emissions.

An installation job starts with the right substrate preparation. Start it right with Kiesel primers.



# PREPARING THE SUBSTRATE



## Okatmos® EG 20

Fast setting primer

- for install-in-one-day applications
- solvent-free and very low emission
- for absorbent and non-absorbent substrates
- promotes advanced Indoor-Air-Quality

Coverage  
approx. 7,5–15 kg/100 m<sup>2</sup>



**Okalift**  
SuperChange

**60x 10 kg plastic canister**

Item no.  
80221 AUS  
80043 NZL

**50 boxes with 12x 1 kg  
plastic bottles**

Item no. 49003



## Okatmos® UG 30

Universal primer

- for absorbent and non-absorbent substrates
- very quick drying
- solvent-free and very low emission
- hygiene promoting
- high bond strength
- for interior and exterior applications

Coverage  
approx. 7,5–15 kg/100 m<sup>2</sup>



**Okalift**  
SuperChange

**60x 10 kg plastic canister**

Item no. 80162 AUS/NZL



## Okatmos® DSG

Dispersion based moisture barrier and primer

- for absorbent and non-absorbent substrates
- quick-drying
- solvent-free and very low emissions
- sanitising characteristics
- high bond strength
- interior use
- as a moisture barrier against increased humidity in unheated cementitious substrates
- protection of the calcium sulphate screed against moisture

Coverage  
approx. 15 kg/100 m<sup>2</sup> on non-absorbent substrates  
approx. 6–7 kg/100 m<sup>2</sup> when diluted with water at a ratio of 1:1  
approx. 12–13 kg/100 m<sup>2</sup> when used undiluted



**60x 10 kg  
plastic canister**

Item no.  
80175 AUS  
80194 NZL

**50 boxes with  
12x 1 kg  
plastic bottles**

Item no. 49082 AUS/NZL



## Okamul PU-V schnell

One-component polyurethane primer

- for absorbent and non absorbent substrates
- fast curing
- solvent-free and water-free
- excellent bond strength
- fast curing on calcium sulfate screed

Coverage  
approx. 10–15 kg/100 m<sup>2</sup> as a primer  
approx. 30–35 kg/100 m<sup>2</sup> as a moisture barrier



**60x 11 kg plastic canister**

Item no. 60077

# PREPARING THE SUBSTRATE



## Okapox GF

Epoxy primer

- especially suitable for critical substrates
- suitable as moisture barrier
- solvent-free and very low emission
- very high bond strength
- water-free
- suitable as a binder for epoxy mortars

Coverage

approx. 3,3–5 m<sup>2</sup> per kg as a primer  
approx. 2–2,5 m<sup>2</sup> per kg as moisture barrier  
approx. 1–1,25 m<sup>2</sup> per kg in combination  
with Kiesel silica glass fiber mesh  
approx. 1,4–1,7 m<sup>2</sup> per kg per cm layer thickness  
as drainage mortar/drainage screed



**45x 7 kg two compartment  
tin container**

Item no. 80026

**60x 3,5 kg two compartment  
tin container**

Item no. 80047

**1 kg two compartment  
tin container**

Item no. 80200



## Okapox Accelerator

Accelerator for 2-component epoxy resin systems

- shortens reaction times
- minimizes waiting times
- easy to apply
- universal use

Coverage

1 container (200 ml) Okapox Accelerator for:  
approx. 3,5 kg Okapox GF

**200 ml plastic container**

Item no. 80233 AUS/NZL



## Okapol SH

Universal resin based binder and adhesive

- solvent-free
- low in emission
- low odour
- for mechanical closing and bridging cracks  
and joints in screeds
- easy to mix
- extrem fast curing
- liquefied or pasty consistency
- mixing of partial quantities possible



**Box with 5 sets  
Comp. A (300 ml) +  
Comp. B (300 ml) +  
screed clips 60339**

Item no.  
80232 AUS  
80256 NZL



## Screed clips

**500-pieces-bags**

Item no. 60298



## PREPARING THE SUBSTRATE



Okatmos® DSG – Moisture Barrier & Primer



# PREPARING THE SUBSTRATE

## Preparing the substrate

### ■ Patching and levelling

Every installer knows that a smooth, level surface is essential for getting quality results. Creating a levelled subsurface that won't telegraph trowel marks to floor covering surface demands a high-quality levelling compound. Unfortunately today's schedules do not allow much time to get those results. Kiesel has developed installation materials that can help you at this crucial step of installation providing fast drying and high quality products.

### ■ Self-levelling

Kiesel's self-levelling compounds allow a quick, easy and professional installation. With excellent flow characteristics they create a smooth surface without tool marks. And with layer-thickness of up to 50 mm in one application it provides a solution for almost every need.

### ■ Tension reduced

High polymer contents of the compounds combined with a perfect blend of fine cements to minimize tension. No cracks, even under high stress, lead to long lasting, professional results. All levelling compounds are chair castor resistant in the appropriate thickness and are suitable for radiant floor heating systems.

### ■ Time saving

When time is an issue, Kiesel is the first choice. Our range of fast-setting products have a very special feature: the self-drying, cement-based matrix bonds the water within itself. The high polymer content and the perfect blend of fine cements still minimize tension. No cracks, even under high stress and in thicker layer will lead to long-lasting, professional results. You save time, money and extra trips to the installation site.

### ■ Cost saving

The most economical way of levelling larger areas is working with automated mixing pumps. Kiesel works in close connection with manufacturers of mixing pumps to offer products with the right performance.

No matter, which requirements are set for the substrate preparation: Kiesel can always give you an answer. With cost-saving, reliable products performing to the highest standards, you can offer solutions which set you apart from the competition.





# PATCHING AND LEVELLING COMPOUNDS



## Servoplan BF 850

Bulk-filler

- with flow properties
- fast curing
- from 5–100 mm film thickness in 1 operation
- pumpable
- suitable over floor heating systems

Coverage

approx. 11,2 m<sup>2</sup> at 1 mm thickness per bag



**54x 20 kg paper bags**

Item no. 80096



## ServoFine F 333

Fine finishing compound

- needs no priming or additives
- for wide array of substrates like ceramic tiles, wood, quarry tile, adhesive residues
- provides a true feather finish
- excellent skim coating properties
- extremely smooth surface
- fast setting, fast drying

Coverage

approx. 4 m<sup>2</sup> with one bag of 4,75 kg at 1 mm thickness

approx. 10,5 m<sup>2</sup> with one bag of 12,5 kg at 1 mm thickness



**72x 12,5 kg paper bags**

Item no. 80005

**50 units 4x 4,75 kg paper bags**

Item no. 80048



## ServoPatch P 303

Feather finish fine surface patching compound

- from 0–20 mm layer thickness
- versatile use
- extreme smooth surface
- fast curing and fast drying
- suitable under castor loads
- suitable over radiant heating

Coverage

approx. 16,7 m<sup>2</sup> at 1 mm thickness per bag



**54x 20 kg paper bags**

Item no. 42029



## Servoplan R 300 S

Patching compound

- sag resistant
- low tension
- quickly ready for traffic
- quickly ready for installation
- suitable for chair castors
- suitable over floor heating systems

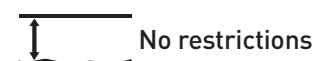
Coverage

approx. 12,5 m<sup>2</sup> at 1 mm thickness per bag



**54x 20 kg paper bags**

Item no. 80013



# PATCHING AND LEVELLING COMPOUNDS



## Servocret RS

Repair filler, screed and patching compound

- up to 50 mm layer thickness
- sag resistant, for walls and floors
- excellent modeling properties
- for repairing floors and walls
- for interior, exterior and submerged applications
- fast setting
- for compensation and slopes for indoor, outdoor and submerged applications
- high level of stability, for wall and floor
- for the repair of concrete and cement plaster

42x 25 kg paper bags

Item no. 80064

Coverage

approx. 15,6 m<sup>2</sup> at 1 mm thickness per bag



## Servoplan RE 330

Exterior/interior graded self-levelling compound

- for balconies, terraces, patio, porches
- wet and submerged environment
- from 3–30 mm layer thickness
- fast drying and curing properties
- self-levelling properties over flat or sloped surfaces
- adjustable water ratio to accommodate stability over sloped areas
- can be used as a repair topping
- pumpable



42x 25 kg paper bags

Item no. 42055

Coverage

approx. 15,6 m<sup>2</sup> at 1 mm thickness per bag



## Servofix FG

Universal self-levelling compound

- pumpable
- suitable under wood flooring
- self-levelling properties
- excellent flow
- up to 10 mm layer thickness
- (can be stretched with quartz sand up to 20 mm)



54x 20 kg paper bags

Item no. 80157 AUS/NZL

Coverage

approx. 14,2 m<sup>2</sup> at 1 mm thickness per bag





# PATCHING AND LEVELLING COMPOUNDS



## Servoplan Ki 1

Premium self-levelling compound

- self-levelling
- very good flow properties
- very low stress
- pumpable
- up to 20 mm layer thickness
- high yield
- suitable under hardwood, engineered and resilient flooring
- very smooth surface, thus reduced consumption of adhesives



**54x 20 kg paper bags**

Item no.

80212 AUS

80247 NZL

Coverage

approx. 14,2 m<sup>2</sup> at 1 mm thickness per bag



## Servoplan S 111

Premium fast setting self-levelling compound

- for interior and exterior use
- low tension build up
- excellent final grip
- very low emission
- promotes advanced Indoor-Air-Quality
- suitable as final load top
- up to 40 mm layer thickness
- excellent self-levelling properties
- extremely fast setting



**42x 25 kg paper bags**

Item no. 80034

Coverage

approx. 15,7 m<sup>2</sup> at 1 mm thickness per bag



## Servoplan S 444

Fast setting flexible self-levelling compound for wood substrates

- excellent final strength
- flexible
- reinforced with quality fibre
- excellent self-levelling properties
- fast curing
- 3–15 mm layer thickness



**54x 20 kg paper bags**

Item no. 80006

Coverage

approx. 16,5 m<sup>2</sup> at 1 mm thickness per bag



# PATCHING AND LEVELLING COMPOUNDS

	<b>Servoplan BF 850</b> Bulk-filler	<b>ServoFine F 333</b> Fine finishing compound	<b>ServoPatch P 303</b> Feather finish fine surface patching compound	<b>Servoplan R 300 S</b> Patching compound	<b>Servocret RS</b> Repair filler, screed and patching compound	<b>Servoplan RE 330</b> Exterior/interior graded self-levelling compound	<b>Servofix FG</b> Universal self-levelling compound	<b>Servoplan Ki 1</b> Premium self-levelling compound	<b>Servoplan S 111</b> Premium fast setting self- levelling compound	<b>Servoplan S 444</b> Fast setting flexible self-levelling compound for wood substrates
Thickness range	5–100 mm	feat- heredge –25 mm	0–20 mm	no limitation	1–50 mm	3–30 mm	1–10 mm	1–20 mm <sup>1</sup>	1–40 mm <sup>5</sup>	3–15 mm <sup>2</sup>
Coverage (per mm thickness) approx.	1,8 kg/m <sup>2</sup>	1,1 kg/m <sup>2</sup>	1,2 kg/m <sup>2</sup>	1,6 kg/m <sup>2</sup>	1,6 kg/m <sup>2</sup>	1,6 kg/m <sup>2</sup>	1,4 kg/m <sup>2</sup>	1,4 kg/m <sup>2</sup>	1,6 kg/m <sup>2</sup>	1,2 kg/m <sup>2</sup>
Coverage (per bag for minimum thickness) approx.	2,24 m <sup>2</sup> at 5 mm thickness per bag	4 m <sup>2</sup> at 1 mm thickness per 4.75 kg bag / 10,5 m <sup>2</sup> at 1 mm thickness per 12,5 kg bag	16,7 m <sup>2</sup> at 1 mm thickness per bag	12,5 m <sup>2</sup> at 1 mm thickness per bag	15,6 m <sup>2</sup> at 1 mm thickness per bag	15,6 m <sup>2</sup> at 1 mm thickness per bag	14,2 m <sup>2</sup> at 1 mm thickness per bag	14, 2 m <sup>2</sup> at 1 mm thickness per bag	15,7 m <sup>2</sup> at 1mm thickness per bag	5,5 m <sup>2</sup> at 3 mm thickness per bag
Processing time, approx.	1 hour	15 min.	15 min.	15–20 min.	30 min.	20 min.	30 min.	30 min.	20 min.	20 min.
Ready for traffic after approx.	2 hours	30 min.	30 min.	30 min.	1 hour	2 hours	1,5–2 hours	1,5–2 hours	1 hour	1–2 hours
Ready for installation after approx.	2 hours	1–1,5 hours	1–1,5 hours	1–1,5 hours	1 hour	ceramic tiles: after approx. 2 hours Natural stone: after completely dry	14 hours <sup>4</sup>	ceramic 2 hours, Resilient and textile 12 hours Stone 24 hours, hardwood, engineered wood 30 hours	3–4 hours <sup>3</sup>	3–4 hours <sup>3</sup>
Roller shear resistance min. thickness (according DIN EN 12 529)		2 mm	2,5 mm	2 mm	–	1 mm	1 mm	1 mm	1 mm	3 mm
Radiant floor heating	✓	✓	✓	✓	–	✓	✓	✓	✓	✓
Self-levelling	✓	–	–	–	–	✓	✓	✓	✓	✓
Pumpable	✓	–	–	–	✓	✓	✓	✓	✓	✓
Very low emission (EMICODE)	EC 1	EC 1	EC 1	EC 1	–	EC 1	EC 1	EC 1 Plus	EC 1	EC 1

See on page	9	9	9	9	10	10	10	11	11	11
-------------	---	---	---	---	----	----	----	----	----	----

<sup>1</sup> with outstanding tension free characteristics  
<sup>2</sup> 3–15 mm; under wood flooring: 3–10 mm  
<sup>3</sup> under wood flooring and linoleum: after approx. 12 hours  
<sup>4</sup> under rubber and wood flooring: approx. 24 hours  
<sup>5</sup> under wood flooring > 2 mm



# AS EASY AS 1, 2, 3

## Priming, Levelling, Bonding!

Everything your floor needs: Okatmos® DSG,  
Servoplan Ki 1, Okatmos® star 100 Plus.



# ADHESIVES FOR ELASTIC FLOOR COVERINGS

## Some facts about adhesives

Our materials offer a multitude of differing that make them a preferred choice with installers. Easy to trowel, reliable bonding, no hazardous vapours and odours, excellent coverage: Our products set the standards.

### ■ Low emissions

**The average person spends about 80 % of their time inside the home and work place buildings. It is obvious that the quality of the indoor air has a great influence on health in these indoor facilities. Kiesel applied a three step program to eliminate emissions from flooring installations:**

#### **Step 1: Reducing the VOC-emissions of the material used**

Kiesel is one of the founding members of the "Association for the Control of Emissions in Products for Flooring Installation (GEV)". GEV established the Emission EC 1 as the toughest European standard for emissions of volatile organic compounds (VOC) and odors from installation material. Our products labeled with the Emission EC 1 emit VOC well under those standards. We also do have the Greenstar Certificate and Leeds.

#### **Step 2: Reducing microbial interactions**

Research has shown that most of the odour problems are not caused by the materials themselves, but by microbial processes and incompatibilities between the substrate, the installation material and the floor covering.

Temperature, the lack of fresh air and humidity triggers the development of bacteria, molds and mildew.

Specially formulated antimicrobial additives used in the Okatmos®-System avoid Indoor-Air-Quality problems right at the source. Okatmos®-System materials are non-toxic, non-volatile, user friendly, environmentally safe and prevent the development of microbial caused by Volatile Organic Compounds.

#### **Step 3: Reducing material incompatibilities**

Most manufacturers only control the emissions from the individual materials alone. These tests are done in artificial test chambers with the product samples spread out on a piece of glass.

This method is obviously not sufficient to provide information to performance in actual applications performed by installers on the site.

In conjunction with the University of Stuttgart Kiesel established a three step testing procedure:

- 1.) Control of emissions by individual products in test chamber.
- 2.) Control of emissions of a test piece consisting of a concrete slab, primer, levelling compound, adhesive and the floor covering.
- 3.) Control of emissions in test rooms under real-live conditions.

Taking this extensive testing procedure into consideration, the Okatmos®-System by Kiesel stands for advanced, solvent-free and very low emission flooring installation materials.

### ■ Easy Application

Floor installation is a tough and demanding job. We see it as our duty to provide you with installation materials, which help you to perform those task in a quick and reliable manner. Materials that have an excellent coverage, are easy trowable, provide a perfect initial and final grip are an excellent choice for today's installation needs.



## Installation of textile coverings

Textile floor coverings provide performance benefits such as noise reduction, ease of maintenance and improved indoor air quality. Their carpet fibers trap allergens which can be removed by appropriate cleaning and therefore can not circulate in the air for you to breathe.

Choosing the appropriate adhesive for installing textile coverings is essential for a high-quality installation.

Okatmos® star 100 Plus is a true multi-purpose adhesive for almost every installation job. It not only adheres safely to almost every textile covering and carpet, even needle-felt, it is also a safe and reliable adhesive for PVC coverings, CV coverings, linoleum and even rubber sheet and tiles up to 4 mm thickness!

Okatmos® ET 6 and Okatmos® EN 30 are our standard-product for contract-installation, with an excellent price quality relation.



### Okatmos® star 100 Plus

Wet and pressure sensitive adhesive



- short ventilation time
- solvent-free and very low emission
- universally applicable
- easy trowable
- anti-microbial properties

**33x 14 kg plastic buckets**

Item no.  
80228 AUS  
80222 NZL

Trowel	Flooring material	Coverage* approx.
TKB A2/V1	PVC, vinyl, rubber	3,3–4 m² per kg
TKB A5	CV-covering	4–5 m² per kg
TKB B1/V2	linoleum, textile coverings	2,9–3,3 m² per kg



### Okatmos® star 100

Fast setting one-side adhesive



- short ventilation time
- solvent-free and very low emission
- for PVC- and rubber-flooring
- easy trowable
- promotes advanced Indoor-Air-Quality

**33x 18 kg plastic buckets**

Item no.  
80110 AUS  
80205 NZL

Trowel	Flooring material	Coverage* approx.
TKB A2/V1 + TKB A3	rubber flooring up to 2,0–4,0 mm as sheet or tiles, homogeneous and heterogeneous PVC covering as sheet or tiles, CV covering	3,3–3,6 m² per kg
TKB B1/V2	textile coverings with latex, PVC- or PUR-backing	2,5–2,9 m² per kg



# ADHESIVES FOR ELASTIC FLOOR COVERINGS



## Okatmos® star 110

Wet-bed adhesive

- fibre-reinforced
- short skin-over time
- low consumption
- easy to spread
- rigid glue line
- sanitising



**33x 14 kg plastic buckets**  
Item no. 80098 AUS/NZL

Trowel	Flooring material	Coverage* approx.
TKB A2/V1	rubber floor coverings of 2–4mm thickness in lengths and tiles with polished rear side	3,6–4 m² per kg
	designer coverings in plank and tile format	3,6–4 m² per kg
	homogeneous/heterogeneous only in tile format	3,6–4 m² per kg



## Okatmos® star 120

Strong wet-bed adhesive

- fast initial grab
- easy to spread
- antimicrobial properties
- very low emissions
- promotes advanced Indoor-Air-Quality



**33x 14 kg plastic buckets**  
Item no. 80150 AUS/NZL

Trowel	Flooring material	Coverage* approx.
TKB A2/V1 + TKB A3	LVT designer coverings in plank and tile format, homogeneous/heterogeneous PVC/CV floor coverings, quartz vinyl floor tiles	2,9–3,3 m² per kg
TKB B1/V2	textile coverings with latex-, PVC- or PUR-backing	2,5–2,9 m² per kg



## Okatmos® star 150 Plus

Pressure sensitive adhesive

- solvent-free
- easy application
- specifically for self-laying textile floor coverings in sheets and tiles



**33x 15 kg plastic buckets**  
Item no.  
80160 AUS  
80187 NZL

Trowel	Flooring material	Coverage* approx.
Moltopren/velour or short pile lambskin roller	self-laying carpet tiles and sheets	8,3–10 m² per kg
TKB A2/V1	VCT-covering	5 m² per kg

# ADHESIVES FOR ELASTIC FLOOR COVERINGS



## Okamul Ki Fix

Special adhesive



- as a system adhesive for Kiesel sealing membrane, sealing collars and sealing tape
- rollable
- watertight
- rapid hardening
- with general building appraisal certificate
- for indoor use

**44x 5 kg plastic buckets  
(component A)**

Item no. 44040

**44x 5 kg paper bags  
(component B)**

Item no. 43000

Trowel	Flooring material	Coverage* approx.
TKB A2/V1	rubber coverings up to 2,0 mm in sheet and tile form with polished back design flooring in plank and tile format Homogeneous/heterogeneous PVC flooring	2,9 m <sup>2</sup> per kg
TKB B1/V2	linoleum, korkment, rubber coverings → 2,0 mm thick in sheets and tiles Kiesel sealing membrane Kiesel interior/exterior sealing corners Kiesel "wall" and "floor" sealing collars	2 m <sup>2</sup> per kg
Paint roller	Kiesel sealing membrane Kiesel interior/exterior sealing corners Kiesel "wall" and "floor" sealing collars	2–2,5 m <sup>2</sup> per kg



## Okamul PU

Polyurethane resin adhesive



- solvent-free and very low emission
- multi-purpose adhesive
- easy to spread
- for interior and exterior applications
- suitable over floor heating systems
- suitable for fork lift traffic

**52x 6 kg plastic buckets**

Item no. 80246 AUS/NZL

**65x 3 kg plastic buckets**

Item no.

80225 AUS

80229 NZL

Trowel	Flooring material	Coverage* approx.
TKB A1/U1 + TKB A2/V1	smooth/textured e.g. rubber, vinyl, LVT	2,9–3,3 m <sup>2</sup> per kg
TKB B1/V2	rough/textured e.g. sports floor, rubber granulate underlayments	2,2–2,5 m <sup>2</sup> per kg
TKB B3/V3	rough e.g. outdoor coverings, with profiled backing	1,5–1,6 m <sup>2</sup> per kg



## Okamul K 5 Plus

Contact adhesive



- solvent-free
- universal application
- high initial adhesion
- walkable immediately
- suitable for chair castors
- suitable for floor heating

**90x 5 kg plastic buckets**


Item no.

80161 AUS

80186 NZL

Trowel	Flooring material	Coverage* approx.
short-haired velour roller brush	PVC, CV floor coverings PVC soft baseboard or skirting boards rubber flooring cork	2,9–4 m <sup>2</sup> per kg
TKB A1/U1	textile linoleum	2–2,5 m <sup>2</sup> per kg

# CONDUCTIVE ADHESIVES FOR ELASTIC TEXTILE FLOOR COVERINGS




### Okatmos® star 100 Plus-L

Conductive premium multipurpose adhesive


- for conductive installation according to DIN 51 953 and DIN 53 279
- solvent-free and very low emission
- promotes advanced Indoor-Air-Quality
- suitable for wide range of materials

Trowel	Flooring material	Coverage* approx.
Kiesel trowel F/L	homogeneous and heterogeneous PVC covering, rubber flooring up to 4,0 mm	2,9–3,3 m² per kg
Kiesel trowel G/L	linoleum, carpet	2–2,2 m² per kg



**24x 14 kg plastic buckets**  
Item no. 80260 AUS/NZL

# ADHESIVES FOR TEXTILE FLOOR COVERINGS




### Okatmos® ET 6


Carpet-adhesive

- solvent-free and very low emission
- high tack
- easy to spread

Trowel	Flooring material	Coverage* approx.
TKB B1/V2	textile coverings, PVC coverings with polyester-fleece backing	2,5 m² per kg
TKB B2	textile coverings with coarse backing	2 m² per kg



**33x 20 kg plastic buckets**  
Item no. 80160 AUS/NZL




### Okatmos® EN 30

Premium adhesive for needle punched carpets

- solvent-free and very low emission
- allows no shrinkage of covering
- extremely high tack
- suitable for chair castors
- promotes advanced Indoor-Air-Quality

Trowel	Flooring material	Coverage* approx.
TKB B1/V2	needle-punched carpet woven-carpet	2,5 m² per kg
TKB B2	needle-punched and woven carpets with coarse backing	2 m² per kg



**33x 18 kg plastic buckets**  
Item no. 80101 AUS/NZL

# ADHESIVES OVERVIEW

	<b>Okatmos® star 100 Plus</b> Wet and pressure sensitive adhesive	<b>Okatmos® star 100</b> Fast setting one-side adhesive	<b>Okatmos® star 110</b> Wet-bed adhesive	<b>Okatmos® star 120</b> Strong wet-bed adhesive	<b>Okatmos® star 150 Plus</b> Pressure sensitive adhesive	<b>Okamul Ki Fix</b> Special adhesive	<b>Okamul PU</b> Polyurethane resin adhesive	<b>Okamul K 5 Plus</b> Contact adhesive	<b>Okatmos® star Plus 100-L</b> Conductive premium multipurpose adhesiv	<b>Okatmos® ET 6</b> Carpet-adhesive	<b>Okatmos® EN 30</b> Premium adhesive for needle punched carpets
Type of installation	perma- nent	perma- nent	perma- nent	perma- nent	re- leasable adhesive	perma- nent	perma- nent heavy duty	perma- nent heavy duty	perma- nent	perma- nent	perma- nent
Ventilating time approx. <sup>1</sup> (according to type of substrate)	5–40 min.	5–15 min.	5–15 min.	10–15 min.	none	40–50 min.	n/a	30–90 min.	5–15 min. <sup>2</sup>	10–15 min.	10–15 min.
Open time approx. <sup>1</sup>	5–30 min.	40 min. <sup>2</sup>	20 min.	30 min.	60 min.	15 min.	60–70 min.	1–3 hours	20 min.	20 min.	25 min.
Ready for load bearing <sup>1</sup>	24 hours	24 hours	24 hours	24 hours	immedi- ately	12 hours	24–48 hours	immedi- ately	24 hours	24 hours	24 hours
Final cure after approx. <sup>1</sup>	72 hours	72 hours	72 hours	72 hours	72 hours	24 hours	72 hours	72 hours	72 hours	72 hours	72 hours
Antimicrobial protection	✓	✓	✓	✓	–	✓	✓	–	✓	✓	✓
Radiant floor heating	✓	✓	✓	✓	✓	✓	✓	✓	✓	✓	✓
Suitable for chair castors (according to DIN EN 12 529)	✓	✓	✓	✓	✓	✓	✓	✓	✓	✓	✓
Acrylic dispersion based	✓	✓	✓	✓	–	–	–	✓	✓	✓	✓
Very low emission (EMICODE EC 1)	EC 1 Plus	EC 1	EC 1 Plus	EC 1 Plus	EC 1	EC 1 Plus	EC 1 Plus	EC 1	EC 1	EC 1	EC 1 Plus
GISCODE according to TRGS 610	D1	D 1	D 1	D 1	RU 1	D1 ZP 1	RU 1	D 1	D 1	D 1	D1

See on page	15	15	16	16	16	17	17	17	18	18	18
-------------	----	----	----	----	----	----	----	----	----	----	----

<sup>1</sup> At +20 °C and 65% relative humidity. Higher temperature and low humidity decreases, lower temperature and high humidity increases this value respectively.

<sup>2</sup> Depending on covering material

\* Coverage is estimated by trial-application on Servoplan S 111. It may vary on different substrates and depends on application angle and manufacturer of trowel.

The mentioned times are approximately information because they can vary.



## ACCESSORIES

### Installation of resilient floorings

#### ■ Durability and Design

Linoleum, vinyl, rubber floor coverings, all have something in common: durability, easy maintenance and great variety of colors and patterns providing first choice flooring in commercial and residential areas.

This material versatility and various installation procedures demand specific adhesives.

Okatmos® star 100 Plus safely adheres rubber flooring with different backing as sheet or tile up to 4 mm (5/32") thickness, it safely adheres linoleum flooring, PVC- and CV-flooring and also needle-felt flooring and textile coverings. It is the one adhesive for almost every installation job.

Okatmos® star 100 is the specialist for PVC- and rubber-flooring. It builds up a high tack in a short period of time to reduce the risk of dimensional changes of rubber flooring and extensive test program has proven the excellent performance of the adhesive. A recommendation of installation is available. No matter which installation situation you are confronted with, Kiesel offers a reliable, easy to use installer and environmentally friendly solution.

### Conductive installation of textile coverings

#### ■ Conductive installation

Static charges as high as several thousand volts can be accumulated by friction of foot or wheel traffic. Conductive or static dissipative installed flooring provides a static control and prevents accidents and damages to material caused by electrostatic discharges (ESD).

These coverings can be found in:

- Hospital surgeries, ICU's radiological facilities
- Computer/data processing installations
- Electronics manufacturing
- Pharmaceutical manufacturing
- Chemical plants
- Explosive environments

Kiesel conductive materials are installed in many parts of the world and provide dependable performance com-

bined with anti-microbial protection and very low emissions in a wide variety of installation situations. Kiesel's long experience with this technology has been proven in the laboratory and in successful field installations for many years.

Kiesel was the first manufacturer to offer light colored, soot-free conductive dispersion adhesive. A light colored, conductive compound avoids the necessity to work with dark, uneasy to handle primers.

Continuous research and testing and a constant commitment to quality insure that Kiesel remains a leader for conductive installation of floor covering.



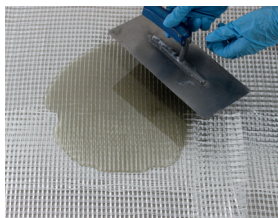
## Kiesel-fibers additive

- easy to mix and blend
- increases tensile and flexural strength
- improves shear strength and tensile adhesion
- helps reducing cracking in critical, unstable substrates
- homogeneous and three-dimensional reinforcement effect
- consistent flow properties of the self-levelling compounds
- works with Servofix FG, Servoplan Ki 1, Servoplan S 111

**1 bucket  
with 50x 250g plastic bags**  
Item no. 80156 AUS/NZL

Coverage

1 bag of 250 g per 20 kg and 25 kg recommended self-levelling compound



## Alumino-Silicate glass fiber mesh

### Special reinforcement for Okapox GF

Coverage

approx. 800–950 g/m<sup>2</sup> of Okapox GF  
as a moisture barrier approx. 500 g/m<sup>2</sup>

Rolls with **25 m length**  
packed in a single carton  
Item no. 15062 AUS/NZL

Rolls with **50 m length**  
packed in a single carton  
Item no. 15042 AUS/NZL



## Bakit RT

### Cleaning wipes

- cleans and removes uncured sealant residue
- cleans tools, surfaces, etc. from oil, ink, adhesives, grease, etc.
- removes oil, sealant – and adhesive stains, grease

**Plastic tub,  
containing 80 wipes**  
Item no. 51176 AUS/NZL

# INSTALLATION PROCEDURES

## ■ 1. Introduction

These procedures have been written to provide guidelines for the successful installation of subfloor preparation, priming, levelling and adhesion of floor covering products over various substrates.

The successful installation is reliant on providing suitable site conditions and installing the products to the relevant Australian and New Zealand standards AS 1884 and AS/NZS 2455. 1-2 Follow ASTM regulation and norms when executing installations in USA and Canada. Kiesel is committed to providing the onsite support and technical knowledge that is required to ensure a successful installation of its products.

## ■ 2. Important notice

It should be noted that the Installer's responsibility is limited to assessing the substrate for smoothness, planeness, cleanliness and moisture content. The Installer cannot be held responsible for any structural movement or any issues that may arise from the structural integrity of the substrate.

## ■ 3. Substrates in new buildings

- reinforced structural concrete
- post tensioned concrete
- cement-based screed
- fibre cement sheet
- tongue and groove timber
- structural particleboard
- structural plywood
- metal

### ■ 3.1 Substrates in existing buildings

- ceramic tiles or natural stone
- terrazzo
- concrete covered with epoxy coatings
- concrete covered with levelling compounds
- wood flooring with hardboard underlays or underlayment
- fibre cement sheet
- tongue and groove timber flooring
- particleboard timber flooring

## ■ 4. Substrate preparation

Firstly the substrate needs to comply with Australian and New Zealand standard AS 1884 Floor coverings – Resilient sheet and tiles – Laying and maintenance Practices clause 3.1.1.4 Surface quality.

**Note: Where a subfloor is so rough or uneven that it is unsuitable for the direct application of the floor covering, corrective action should be taken (e.g. steel-trowelled underlayment), as agreed between the purchaser and the floor laying contractor.**

## Cleaning

Before laying operations begin, materials such as grease, oil, paint, existing floor coverings, curing or parting agents, or any surface treatment which could adversely affect adhesion shall be removed from the subfloors.

In recent times excessive surface contaminates such as "mark out paints" have been causing delamination of floor preparation and adhesive products. Every effort should be taken to ensure non-solvent based marks out paints are used. These types of contaminates including plaster, paint and general construction residues should be mechanically removed from the surface via diamond grinding, shot blasting etc to ensure the surface is a clean open porous substrate. Following this the substrate should be thoroughly vacuumed to remove any dust, dirt and loose materials.

It is recommended that a minimum of 3 mm of Kiesel levelling compound is allowed for to ensure compliance with the above standard.

**Note: We cannot stress enough the importance of correct substrate preparation as this provides the key for the entire installation.**

## ■ 4.1 Installation and commissioning over Subfloor Heating Systems

The subfloor heating system should be turned on and commissioned 7 days prior to the installation of any floor preparation products or adhesives. This will ensure that any excess construction moisture is removed from the substrate. Once this has been done the system needs to be turned off 48 hours prior to installation and a moisture test is recommended to be carried out to ensure compliance to AS 1884.

After this commissioning period the substrate should be assessed for any excessive structural movement in the way of cracking from shrinkage in the drying process. Any further shrinkage during the drying process could cause cracking or de-lamination of the preparation products installed over it.

Once the floor coverings have been installed and the adhesive has been allowed to cure for a minimum of 48 hours the commissioning process of the heating system can begin. Ensure the heating system has an appropriate thermostat control that will enable the temperature to be increased at 2 °C (3.6 °F) per day until the desired temperature is reached. The normal operating temperature should not exceed 28 °C (82 °F) and the system should never be increased at greater intervals than what has been suggested. In the case of these intervals being any greater than suggested the floor preparation products and the adhesive can go into thermal shock resulting in failure and subsequent de-lamination from the substrate.

## ■ 5. Obligation of testing the substrate

- Australian standards AS/NZS 2455.1 and AS 1884 Floor coverings – Resilient sheet and tiles. Concrete substrates shall be considered sufficiently dry when measurements taken at 40 % depth for an on-ground concrete slab or 20 % depth for a suspended concrete slab does not exceed 75 % relative humidity. Three tests shall be performed for the first 100 m<sup>2</sup> and at least one additional test for each additional 100 m<sup>2</sup> and other recommended positions in accordance with ASTM F2170. If the substrate moisture content exceeds these limits then measures need to be taken to ensure that the moisture vapour does not jeopardize the installation. Contact your Kiesel representative regarding moisture vapour control products.
- Ensure that substrates contaminated with oil, grease, wax, paints, curing membranes or any other surface contaminants are thoroughly removed before any installation works begin.
- Expansion joints or control joints should not be covered or connected.
- Assure that the climatic conditions are not below or above what are recommended in AS 1884 section 4.1.1 and these are maintained for a minimum period of 48 hours after installation.

When products used in USA and Canada, refer to the countries industry standard(s):

- a) ASTM norms and regulations
- b) CRI #104 – Standard for Installation of Commercial Carpet,
- c) CRI #105 – Standard for Installation of Residential Carpet,
- d) RFCI (Resilient Floor Covering Institute) – Recommended Installation Practice for Vinyl Composition Tile (VCT),
- e) RFCI (Resilient Floor Covering Institute) – Recommended Installation Practice for Homogeneous Sheet-Flooring Fully Adhered,
- f) NOFMA (Wood Flooring Manufacturers Association) – Installing Hardwood Flooring.

## ■ 6. Types of resilient coverings

- homogenous coverings
- heterogeneous coverings
- PVC coverings
- Cushioned vinyl (CV) coverings
- Rubber flooring
- Linoleum
- Vinyl Composite Tiles (VCT)

## ■ 6.1 Types of textile coverings

Textile coverings are manufactured using numerous fibres including but not limited to wool, synthetic nylons, polypropylenes and solution dyed nylons. Some of these fibres can also be blended to form the textile covering which are also manufactured using a wide variety of backings. Because of this the right adhesive must be selected for adhering these products to the substrate.

Types of backings

- Jute
- Woven backing
- synthetic backing (Action back)
- latex foam backing
- polyurethane backing
- PVC backing
- Fleece or fibre backing

## ■ 7. Installation materials

For the best results use Kiesel primers, patching and levelling products as well as Kiesel adhesives to form a One System Installation package. This will ensure compatibility of all products and full Kiesel technical support.

## ■ 8. Installation

Control of the climatic conditions in the environment that the products are to be installed is critical. The times mentioned in this catalogue and our data sheets are measured at room temperature of 20 °C (68 °F) and an air humidity of 65 %. Temperatures outside of this can shorten or extend dry times, substrates temperatures below 5 °C (41 °F) will not allow the products to cure in their normal process. This could result in failure or de-lamination of the products from the substrate.

Prior to performing any installation works allow the floor coverings, levelling compounds and adhesives to acclimatise to the environment that they are to be installed in to. Follow all manufacturers recommendations for minimum and maximum temperatures for installation of their products.

## ■ 9. Final thought

Please contact our technical department if you have any doubt of the substrate or correct installation methods before installing any products.

Additional information and technical datasheets can be obtained at our website **[www.kiesel.com](http://www.kiesel.com)** or in the data sheets section of our Kiesel App.



TABULAR OVERVIEW

	Okatmos® DSG Dispersion based moisture barrier and primer	Okatmos® EG 20 Fast setting primer	Okatmos® UG 30 Universal primer	Okamul PU-V schnell One-component polyurethane primer	Okapox GF Epoxy primer (included Okapox Accelerator)	Okapol SH Universal resin based binder and adhesive	Servoplan RE 330 Exterior/interior graded self-levelling compound	Servoplan KI 1 Premium smooth surface	Servoplan S 111 Premium fast setting levelling compound	Servoplan S 444 Fast setting self-levelling compound for wood substrates	Servoplan BF 850 Thick-film filler	Servoplan R 300 S Patching compound	Servofine F 333 Premium patching and skim coating compound	Servofix FG Universal self-levelling compound	ServoPatch P 303 Feather finish fine surface patching compound	Servocret RS Repair filler, screed and patching compound
Substrates																
cement screed heated/unheated	●	●	●	●	●	●	●	●	●	●	●	●	●	●	●	●
flowable cement screed heated/unheated	●	●	●	●	●	●	●	●	●	●	●	●	●	●	●	●
calcium sulfate heated/unheated	●	●	●	●	●	●	●	*● <sup>1</sup>	● <sup>1</sup>	●	●	●	●	*● <sup>1</sup>	●	●
flowable calcium sulfate heated/unheated	●	●	●	●	●	●	●	*● <sup>1</sup>	● <sup>1</sup>	●	● <sup>1</sup>	●	*●	*● <sup>1</sup>	*●	
magnesia screed	●			●	●	●	●	●	●	●	● <sup>1</sup>	●	●	●	●	
asphalt mastic screed IC 10	●	●	●	●	●	●		● <sup>2</sup>	● <sup>2</sup>	● <sup>2</sup>	● <sup>1</sup>	*●	●	● <sup>2</sup>	●	
wood particle boards (V 100 E1)	●	●	●	●	●	●		*● <sup>3</sup>	*● <sup>3</sup>	● <sup>2</sup>	● <sup>2</sup>	●	●		●	
wood planks	●	●	●	●	●	●				● <sup>2</sup>						
stone floor or terrazzo	●	●	●	●	●		●	●	●	●	●	●	●	●	●	●
concrete	●	●	●	●	●	●	●	●	●	●	●	●	●	●	●	●
prefabricated dry screed	●	●	●	●	●			*● <sup>1,2</sup>	*● <sup>2</sup>	*● <sup>2</sup>	*● <sup>1,2</sup>	●	●		●	●
adhesive residue	●	●	●	●	●	●		●	●	●	●	●	●	●	●	●
GISCODE	D1	D1	D1	RE 1	RE 1	RU 1		ZP1	ZP1	ZP1	ZP1	ZP1	ZP1	ZP1	ZP1	ZP1
EMICODE	EC 1 Plus	EC 1 Plus	EC 1 Plus	EC 1	EC 1 Plus	EC 1 Plus		EC 1 Plus	EC 1	EC 1	EC 1	EC 1	EC 1	EC 1	EC 1	-
See on page	5	5	5	5	6	6	10	11	11	11	9	9	9	10	9	10

## TABULAR OVERVIEW

	Okatmos® star 100 Plus Wet and pressure sensitive adhesive	Okatmos® star 100 Fast setting one-side adhesivet	Okatmos® star 110 Fibre reinforced wet-bed adhesive	Okatmos® star 120 Strong wet-bed adhesive	Okatmos® star 150 Plus Pressure sensitive adhesive	Okatmos® ET 6 Carpet-adhesive	Okatmos® EN 30 Premium adhesive for needle-punched carpets	Okatmos® star 100 Plus-L Conductive premium multipurpose adhesive	Okamul Ki Fix Specialised adhesive	Okamul PU Polyurethane resin adhesive	Okamul K 5 Plus Contact adhesive
Carpet backings											
polypropylene (Action Bac TM) or Jute											
latex Unitary											
woven											
felt back sheet flooring											
self-laying carpet tiles											
needle felt											
Resilient flooring											
PVC coverings <sup>4</sup>											
CV coverings											
LVT											
linoleum <sup>4</sup>											
rubber up to 2,5 mm, sheet and tiles <sup>4</sup>											
rubber 2,5-4 mm, sheet and tiles <sup>4</sup>											
VCT											
See on page	15	15	16	16	16	18	18	18	17	17	17

- Highly recommended.
- Recommended. Some restrictions may apply.
- Problem solver for certain installation situations.

- \* Please contact technical service department.
  - 1 for layer thickness > 10 mm prime with Okapox GF
  - 2 maximum layer thickness 10 mm
  - 3 for layer thickness up to 5 mm prime with Okatmos® EG 20 for layer thickness up to 10 mm prime with Okapox GF
  - 4 the covering must be also conductive
  - 5 self-laying tiles
- The mentioned times are approximately information because they can vary.

# NOTCH BLADES

## Recommended tools for processing Kiesel Products

### Fine trowel



TKB A1



TKB A2



TKB A4



TKB A5

### Versablade trowel



U1



V1



V2



V3

### Special trowel



Kiesel F/L trowel



Kiesel G/L trowel

### Coarse trowel



TKB B2

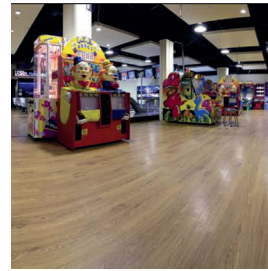
## REFERENCE OBJECTS



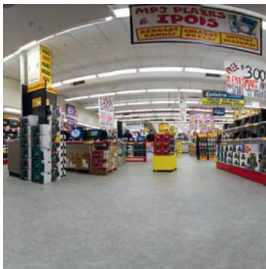
Emirates Marquee  
Melbourne Cup 2009,  
Melbourne, Australia.



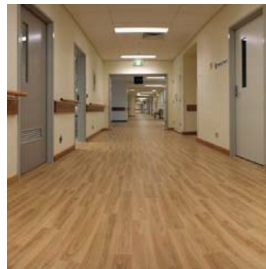
Munchkin Land,  
Highpoint VIC, Australia.



Centro Shopping Centre,  
Surfers Paradise, Australia.



JB Hi-Fi, Bourke Street Store,  
Melbourne, Australia.



St Vincent hospital,  
Brisbane, Australia.



Liverpool Hospital,  
Sydney, NSW.



### Servoplan Ki 1

Cement bonded, acrylic polymer enhanced, fast drying, self-levelling compound for levelling concrete based subfloors up to 20 mm / 1/32"-3/4" layer thickness in one pour. Servoplan Ki 1 is suitable as a subfloor for installation of: ceramic, natural stone, textile, resilient and parquet/hardwood floor coverings. For dry interior areas as well as for moisture class Ao (German) combined with a bonded waterproofing. Also suitable for mastic asphalt attics of hardness class IC 10 in layer thicknesses up to 10 mm.

Servoplan Ki 1 can be used in the living areas as directly usable floors.

#### Features:

- self-levelling, fast drying
- excellent flow characteristics
- very low stress, high compressive strength
- pumpable
- extended coverage
- layer thickness from 1 to 20 mm
- suitable under tiles, parquet, hardwood and resilient flooring

#### Coverage:

- approx. 1.4 kg/m<sup>2</sup> per mm thickness
- approx. 60 sq. ft. per bag at 1/8"
- approx. 14.2 m<sup>2</sup> at 1 mm per bag

For more information about Servoplan Ki 1 or to view our extensive range of Kiesel adhesives, screeds and primers, visit [www.polyflor.co.nz/kiesel](http://www.polyflor.co.nz/kiesel) or [www.polyflor.com.au/kiesel](http://www.polyflor.com.au/kiesel).

Polyflor Australia - 101 Prosperity Way - Dandenong South VIC 3175  
Call Australia 1800 777 425 - [www.polyflor.com.au](http://www.polyflor.com.au) - [sales@polyflor.com.au](mailto:sales@polyflor.com.au)  
Polyflor New Zealand - 2 Narek Place - Manukau, Auckland 2104 - New Zealand  
Call New Zealand 0800 765 935 - [www.polyflor.co.nz](http://www.polyflor.co.nz) - [sales@polyflor.co.nz](mailto:sales@polyflor.co.nz)



### Other Kiesel Projects

- Melbourne international Airport, Victoria
- Brisbane Domestic Airport, Qld
- Princess Alexandra Hospital, Brisbane, Qld
- Monash University, Melbourne, Victoria
- Griffith University, NSW
- Burswood Casino, Perth, WA
- Sir Charles Gairdner Hospital Perth, WA





Polyflor Australia  
101 Prosperity Way  
Dandenong South VIC 3175  
Call Australia 1800 777 425  
[www.polyflor.com.au](http://www.polyflor.com.au) · [sales@polyflor.com.au](mailto:sales@polyflor.com.au)

Polyflor New Zealand  
2 Narek Place  
Manukau, Auckland 2104 · New Zealand  
Call New Zealand 0800 765 935  
[www.polyflor.co.nz](http://www.polyflor.co.nz) · [sales@polyflor.co.nz](mailto:sales@polyflor.co.nz)



Kiesel Bauchemie GmbH u. Co. KG  
Wolf-Hirth-Strasse 2 · 73730 Esslingen · Germany  
Tel. +49 711 93134-0 · Fax +49 711 93134-140  
[www.kiesel.com](http://www.kiesel.com) · [kiesel@kiesel.com](mailto:kiesel@kiesel.com)