

Polyflor News

Issue 2 | 2018

In this Issue:

- Recofloor
- Dementia-friendly flooring
- Case studies
- Trend Spotlights
- New products



NEW FOR 2018

PALETTONE





8618 English Garden

Polyflor's new Palettone PUR 2mm flexible PVC flooring enables you to bring a special brand of style and elegance to any commercial environment.



8613 Faded Denim

Available in sheet in a palette of 50 contemporary colours, ranging from pale neutrals through to more intense shades, Palettone PUR features a solid colour base with complementary toned highlights.



8631 Heather Honey

Palettone PUR is 100% recyclable and contains 25% recycled material. Ideally suited for heavy traffic areas, Palettone PUR is recommended for use throughout commercial interiors, healthcare and education facilities, as well as retail outlets.



Education

Bucklands Beach Intermediate

Product Used

Polysafe Standard PUR
Black Walnut 4150

Polysafe Standard - a heavy duty safety flooring with a traditional decoration was recently installed in the Hard Materials room at BBI.

Ideal in hygiene critical locations subjected to contaminant spillages, Polysafe Standard provides sustainable slip resistance and continued underfoot protection.

Featuring a Polysafe PUR maintenance enhancement for improved cleanability, the range is used in water spillage areas such as food preparation areas, bar serveries, clinics, laundry and sluice rooms, washrooms, laboratories, classrooms and many institutional applications.

- 100% recyclable and contains recycled material
- Available in 16 shades
- 2mm gauge

POLYSAFE™



Hospitality

Moana Sands

Rarotonga

Product Used

Forest FX
Oiled Oak 2990

Wood effect sheet vinyl from the Polyflor Forest FX collection was used to create a relaxed, stress free environment at Moana Sands resort, Rarotonga.

The Forest FX collection is specifically designed for a wide range of commercial interiors. The contemporary and creative timber designs are ideal for education, healthcare, office, retail and leisure sectors, developed and presented in a practical, resilient and hygienic product construction.

The collections eclectic mix of traditional warm oak planks and cooler grey timbers creates an authentic wood palette that can be matched with a wide variety of interior design schemes, whilst the addition of 2 parquet effect designs adds to the collections versatility.

The durability of Forest FX lends itself perfectly to the demands of commercial interiors, leading with the key advantages of aesthetics and performance, with the added flexibility to meet corporate design schemes.

To further enhance the floorcovering, Forest FX features a high quality, cross-linked polyurethane reinforcement (PUR) providing a low cost, polish-free maintenance regime for the lifetime of the product.

Forest FX is 100% recyclable. All these qualities make the collection environmentally preferable whilst meeting decorative, practical, budgetary and maintenance objectives.

Forest *fx*TM



Polyflor strives to be an environmentally and economically sustainable business, recycling and reducing waste and being as carbon neutral as possible.

Our new product development continues to focus on reducing environmental impact by providing a high level of durability, reliability, ease of maintenance and safe disposal. When choosing Environmentally Preferable Flooring from Polyflor, it is also important to be assured that this means zero compromise in choice and function of the product – our flooring ranges are completely fit for purpose.

Polyflor is a founding and funding member of Recofloor, the industries Vinyl Take-Back

Scheme for recycling end of life post-consumer vinyl flooring. We recycle installation off-cuts, clean uplifted flooring and old stock roll ends and samples. We recover and recycle into new flooring or other useful products such as traffic cones.

We have our own Recofloor Vinyl Take Back Collection and recycling programme in New Zealand. Recofloor wheelie bins are located at both our Auckland and Christchurch warehouses for the collection of vinyl off-cuts and clean uplifted material.

Call us on 0800 765 935 to find out more.



Recofloor™
Vinyl Take-Back Scheme



Okapol SH



Versatile, easy-to-mix, 2-component silicate casting resin for the non-positive closure of screed cracks and screed joints, as well as for the gluing down of angle rails, nail strips, profile strips and strips of metal, plastic and wood. The consistency can be adjusted depending on the joint width. The fast hardening of Okapol SH allows the surface to be covered after 45 - 60 minutes.



- solvent free
- low in emission
- low odour
- for mechanical closing and bridging cracks and joints in screedsleicht anmischbar
- extrema fast curing
- liquefied or pasty consistency
- mixing of partial quantities possible

Depending on the width and depth of the screed cracks and joints. With a crack width of 4.0 mm and a ridge depth of 25 mm, the consumption is approx. 120 ml / m.

For more information about **Okapol SH** or to view our extensive range of Kiesel adhesives, screeds and primers, visit www.polyflor.co.nz/kiesel

Hospitality

Denzien Urban Distillery Wellington

Product Used

Polysafe Apex Biotite 4203

New Zealand's first destination urban distillery is opening in Lombard Lane, Wellington's newest Te Aro Laneway development.

"We're fanatical in our pursuit of no-compromises craft gin, distilling Wellington rain water, organic native botanicals, and sustainable whey ethanol in a gorgeous Kothe copper still."

"Our mission is to make brazen city gins that Denziens love" - Eamon & Mark, owners of the distillery.

Polysafe Apex, the safety flooring heavyweight designed to stand the toughest of tests in extreme areas was used in the distilling area.

"We needed the floor to be a strong neutral foil to the drama of a twenty-four foot tall copper still, whilst also providing a compliant wet room surface. Our architect worked with Polyflor to find a solution that enhances the space in rich black with a subtle sparkle."

Suitable for use in busy kitchen environments where the floor is subjected to everyday spillages, Polysafe Apex provides the required specially enhanced slip resistant properties, to ensure the optimum in underfoot safety and added protection to employees. Available in 6 colours with an R12 slip rating, Polysafe is 100% recyclable and contains recycled material.

POLYSAFE™



Retail

Huckleberry Browns Bay

Product Used Forest FX Eton Oak Parquet 3108

Huckleberry bring natural, organic foods to New Zealanders through 9 intimate and convenient stores in the North Island.

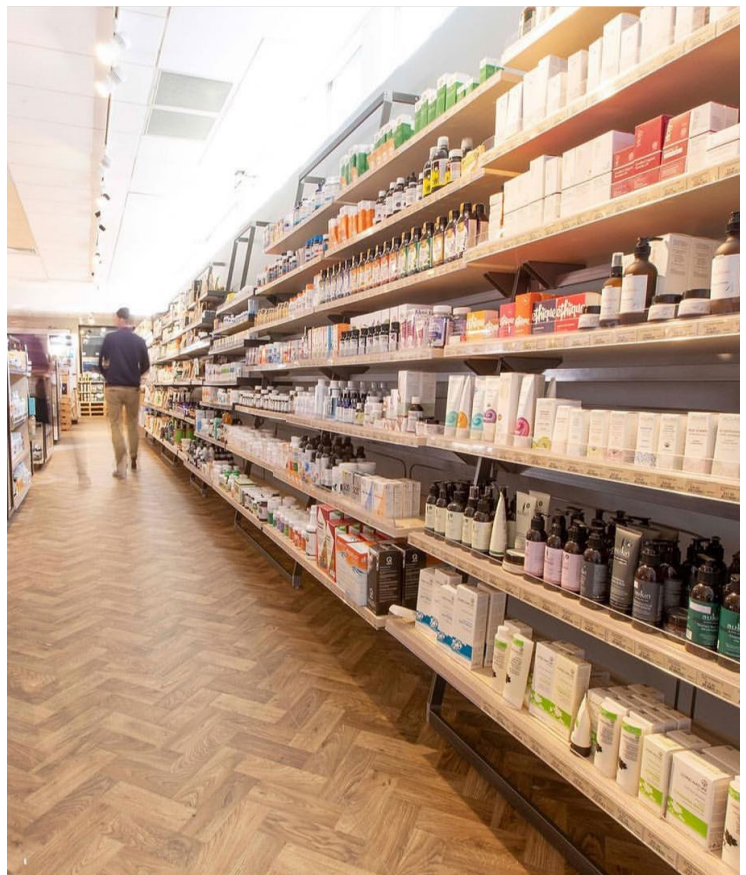
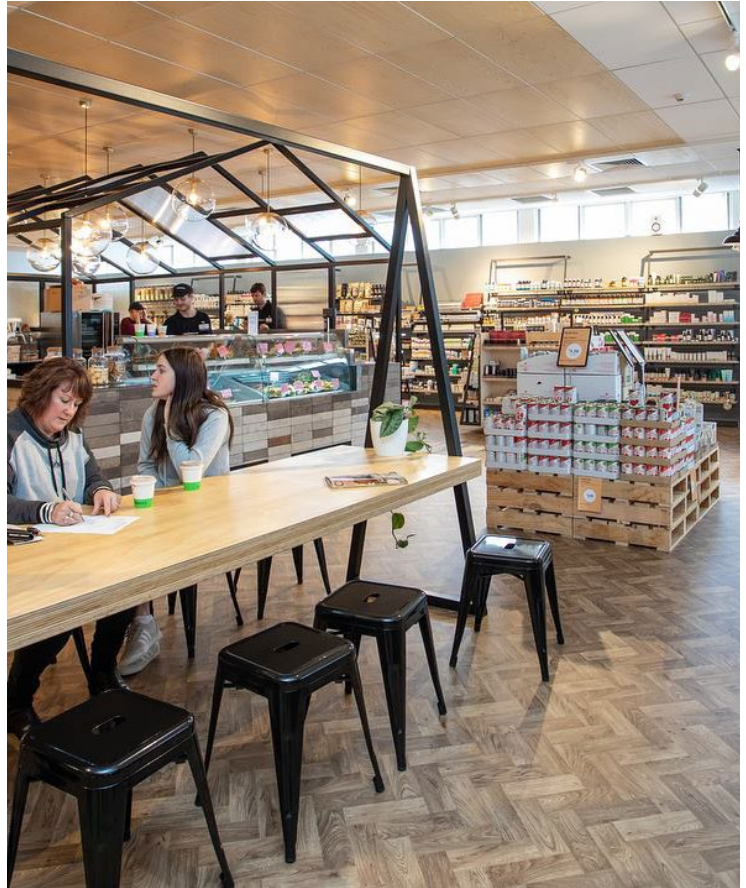
Their newest store located in Browns Bay opened in July 2018. The choice of Forest FX in a parquet design really compliments this new fitout.

The Forest FX collection of wood effect vinyl sheet floorcoverings is specifically designed for a wide range of commercial interiors. The contemporary and creative timber designs are ideal for education, healthcare, office, retail and leisure sectors, developed and presented in a practical, resilient and hygienic product construction.

The durability of Forest FX lends itself perfectly to the demands of commercial interiors, leading with the key advantages of aesthetics and performance, with the added flexibility to meet corporate design schemes.

Forest FX is 100% recyclable and features a high quality, cross-linked polyurethane reinforcement (PUR) providing a low cost, polish-free maintenance regime for the lifetime of the product.

Forest *fx*TM



Large format planks & tiles

One of the biggest commercial interior trends we've seen in the market is the introduction of larger format planks and tiles, particularly in large scale interiors.

Large floor tiles are a popular choice for commercial interiors as they easily transform a space, with very little effort required. For smaller spaces, large format tiles conjure the impression of spaciousness, they amplify the sense of space and create an open and uncluttered look. Additionally, the result of fewer seams and grout lines eliminates any feeling of restrictiveness in cramped and confined interiors. Larger floor tiles also permit a quick and easy installation process; they take up a greater surface area in which installations can be completed with overall fewer planks or tiles.

For larger spaces, the surge in demand for clean, architectural and contemporary interiors lends itself to the popularity of larger floor tiles. Materials such as stone and concrete are fashionable choices for large scale flooring tiles, in line with the rise in popularity for natural elements in interiors.

Whilst genuine concrete looks fabulous, it can be susceptible to staining. LVT is a great alternative to achieve a similar effect and can be used to create a seamless open plan interior when combined with complementary large format tiles on the walls.



Expona Commercial
Grey Salvaged Wood 4104



Expona Commercial
Painted Cement 5054



Expona Commercial
Bronze Salvaged Wood 4106

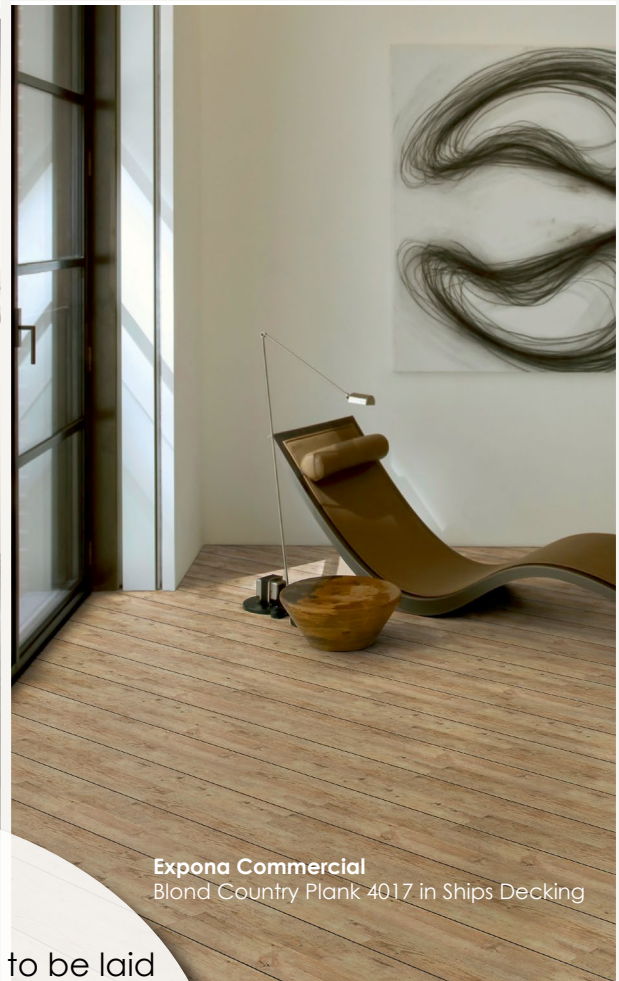


Expona Commercial
Blue Salvaged Wood 4103

Decorative Design Floors



Expona Commercial
Grey Pine 4063 in Full Plan Herringbone



Expona Commercial
Blond Country Plank 4017 in Ships Decking

The flexibility of Luxury Vinyl Tiles to be laid individually allows us to discover a wide assortment of flooring patterns. With little or no cutting required, beautiful flooring installations such as herringbone and tramline patterns can create eye-catching interiors, guide users through the space or create multi-purpose zones.



Expona Commercial
Wild Teak 4102 in Double Plank Tramline



Expona Commercial
Natural Barnwood 4107 in Brickwork Wood Tile Effect

Hospitality

Action Café

Nelson

Product Used

VC Tiles Piha 2229 & Airlie 2221

Action Centre in Nelson is a multi-entertainment centre offering mini golf, tenpin bowling, inflatable world and a cafe and bar. The Action Café was recently renovated and they got creative with a beautiful retro floor design using Polyflor Vinyl Composition (VC) tiles.

VC tiles are recommended as a cost effective flooring solution for public and commercial buildings such as supermarkets, retail stores, schools and storage areas.

An economic flooring solution with excellent durability, these tiles have a 3mm gauge.

6 shades available
300mm x 300mm tile size



Retail

Sunglass Hut Wellington

Product Used

Noppe Stud Warm Red 012 &
Expona Simplay Light Grey Concrete 2567

Luxury vinyl tiles from the Expona Simplay collection were beautifully paired with high grade synthetic rubber SaarFloor Noppe Stud tiles to create a striking floor design in the new Sunglass Hut at Queensgate Mall, Wellington.

The Expona Simplay collection of loose lay vinyl tiles and planks have been developed for heavy commercial interiors, where a design-led and practical floorcovering is required. Authentic reproductions of beautiful and natural materials are presented in a ready to lay product, designed to reduce installation time.

Noppe stud flooring is a hard wearing rubber tile with a low-profile studded surface for heavy commercial use, available in 12 colours with a 3mm gauge. Noppe Stud tiles are suitable for use in areas of high public circulation such as shopping malls, airports, department stores, hospitals and education establishments.

EXPONA® SIMPLAY



DEMENTIA-FRIENDLY FLOORING



Forest FX

DEMENTIA-FRIENDLY FLOORING CHECKLIST

- *Continuous flooring surface*
- *Tonal contrast*
- *Reduce impact sound*
- *Accentuate colours*
- *Avoid sensory overload*
- *Reduce sparkle*
- *Matt floor finish*
- *Blend flecks*
- *Avoid smells & odours*
- *Provide smooth transitions*

The care sector continues to be an area where dementia-friendly interior design can have a real impact on health and wellbeing, helping to promote a more positive environment for people living at home or within an assisted living facility.

With millions of people living with dementia worldwide and the rate of diagnosis rising, our building design of tomorrow needs to be future proofed to account for this increase and generate surroundings that promote inclusive design requirements, contributing to an improved quality of life for those living with dementia.

Along with appropriate lighting and signage to aid navigation, the floor and walls are integral components to the interior space that can provide a homely, welcoming and non-institutional feel for those living and working within the residential care setting.

With an array of product choice and depth of stock availability, Polyflor is the chosen destination for many in the specification chain who are working on specialist care developments, whether new build or refurbishment.

Dementia-friendly flooring is increasingly important to specifiers and Polyflor can service demand with a variety of design options from different product families. This depth of product choice covers all performance and aesthetic requirements across many use areas within commercial or residential settings.

Choosing the right flooring is key in promoting a more positive and inclusive environment to those living with dementia



Polysafe Quattro




Expona Commercial

NEW FOR 2018

EXPONA[®]

DOMESTIC





Ideal for all areas of the home, the Expona Domestic Collection ensures high performance and optimum style.

In addition, Expona Domestic is suitable for moderate commercial applications such as light traffic areas within hotels, conference rooms and small offices.


From a collection of 30 colour and style options we are confident you will own a floor design to be proud of.

Expona Domestic is top quality vinyl flooring available in tile and plank formats.

- 2mm gauge
- 0.4mm wear layer
- 100% recyclable
- Green Tag certified



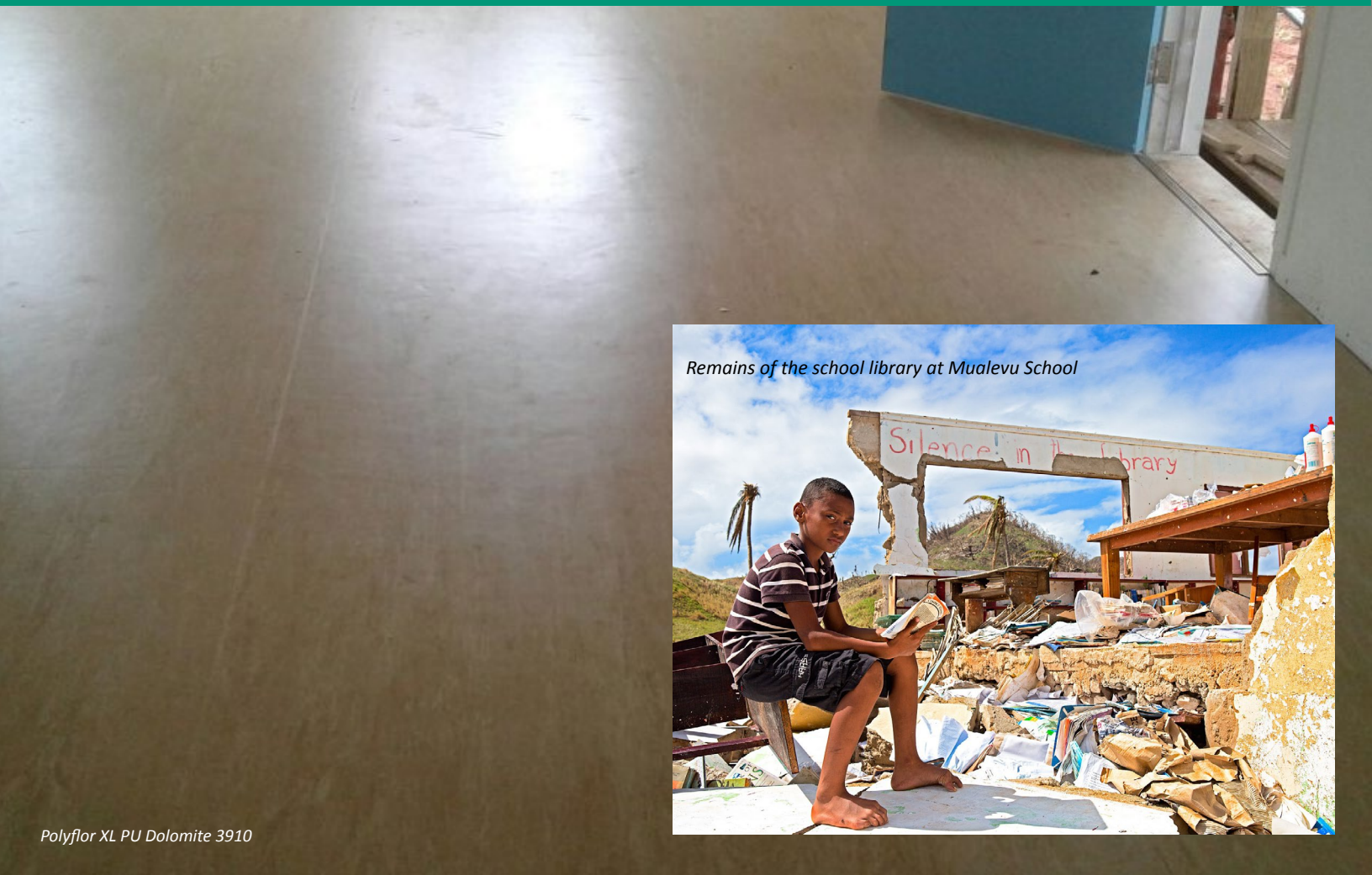
5831
Nordic Oak



5829
Mill Oak Mini Parquet



5950
Scandinavian Country
Plank



Polyflor XL PU Dolomite 3910



On February 20, 2016, a category 5 tropical cyclone thrashed the South Pacific island nation of Fiji. When the storm came ashore on the island of Koro, it packed sustained winds of 300 kilometers (185 miles) per hour. According to several news and meteorological sources, it was the second strongest landfalling cyclone in recorded history.

The powerful cyclone killed at least 44 people, damaging or destroying thousands of houses, and significantly affecting about 350,000 people.

\$10 million of New Zealand aid was sent to help Fiji to rebuild its public infrastructure destroyed

in Cyclone Winston, including schools and buildings on Vanua Balavu in the neighbouring Lau islands.

Pacific Building Solutions (PBS) won the tender for the reconstruction work on Vanua Balavu from the New Zealand government in September 2016, following a rigorous tender process.

According to the PBS public relations co-ordinator, Atelaite Cama, it was in January 2017 that an original team of 36 arrived on the island to set up a camp at the Fiji Roads Authority Depot in Lomaloma for the works to begin.

Ms Cama said by April 2017, the

PBS workforce on Vanua Balavu had increased to 140 including a team of locally-hired workers.

A total of six schools on Vanua Balavu were rebuilt and repaired as a result of the NZ AID programme. The schools include Adi Maopa Secondary School, Adi Maopa Primary School, Mualevu Village School, Daliconi Village School, Cikobia Village School and Mavana District School.

Adi Maopa Secondary School, the only secondary school on the island now boasts one of the best structures in the entire Lau Group if not the country, with 10 classrooms and will also act as an Evacuation Centre in times of need.

Over 2700m² of Polyflor XL PU made its way to Fiji for installation in the 6 schools.

Attractive, high performance, heavy duty homogeneous sheet floorcovering with a polyurethane surface treatment which provides an excellent foundation for an easy, ongoing maintenance regime. Featuring a duotone marbled decoration, XL PU is available in a broad palette of 18 vibrant shades.

Demonstrating outstanding durability and abrasion resistance, XL PU is recommended for public, institutional and commercial buildings as well as hospitals, schools, laboratories and offices.

- 2mm Gauge
- 2mm Wear Layer
- 2m x 20m Roll Size
- Greentag Certified
- 100% recyclable



28 NEW
shades
launching in
2019

Domestic Cushion Vinyl

Visit the Polyflor website to view our range of Domestic Cushion Vinyls
www.polyflor.co.nz/products/domestic-cushion-vinyl