

Architex PUR

PRODUCT SPECIFICATION

Key Features

- > Wood, stone & abstract designs
- > Loose lay luxury vinyl sheet
- > Available in 2m, 3m & 4m roll widths
- > 19dB acoustic performance
- > Light commercial & residential



Product Format	Standard	Result
Gauge	ISO 24346 (EN 428)	3.5mm
Wear Layer	ISO 24340 (EN 429)	0.35mm
Total Weight	ISO 23997 (EN 430)	2150g/m ²
Finish		PUR

Sheet Sizes	Size	Shades	Quantity per Box	Coverage per Box/Roll
Sheet	4m x 20-25m	18	-	80-100m ²
	3m x 20-25m	18	-	60-75m ²
	2m x 20-25m	18	-	40-50m ²

Performance Requirements	Standard	Result
General Performance	ISO 26986 (EN 653)	Conforms
Use Area	ISO 10874 (EN 685)	23, 32
Slip Resistance	EN 13893 DIN 51130 / DIN EN 16165 Ann. B	Class DS R10
Abrasion Resistance	EN 653	Group T
Reaction to Fire	EN 13501-1	Class Bfl-S1
Static Electrical Propensity	EN 1815	≤2.0kV Classified as 'antistatic'
Residual Indentation	ISO 24343-1	≤0.20mm
Castor Chair (continuous use)	ISO 4918 (EN 425)	Suitable
Furniture Leg	ISO 16581 (EN 424)	Pass
Dimensional Stability	ISO 23999 (EN 434)	≤0.40%
Flexibility	ISO 24344 (EN 435)	(Method A) Pass 20mm ø
Thermal Resistance	EN 12667	0.0542m ² K/W 0.542 Tog
Underfloor Heating		Suitable, max 27°C
Light Fastness	ISO 105-B02 (Method 3)	≥6

Sustainability

	Standard	Result
BRE Green Guide		A+ Generic
Specific EN 15804 EPD		Available
Recyclable & Reusable		100%
REACH		Compliant
Indoor Air Comfort Gold		Eurofins certified product
FloorScore		Certified
AgBB/ABG		Pass

Acoustic Performance

	Standard	Result
Impact Sound Reduction	ISO 10140-3	19dB

Maintenance Performance

	Standard	Result
Resistance to Chemicals	ISO 26987 (EN 423)	Good resistance

All Polyflor commercial sheet vinyl ranges provide a continuous, impervious and hygienic flooring solution which can be confidently cleaned in accordance with recommended maintenance procedures and approved maintenance products. The implementation of an effective cleaning regime is the most important defence against infection.



Polyflor Ltd. Head Office

PO Box 3, Radcliffe New Road, Whitefield, Manchester, M45 7NR • Tel: +44 (0) 161 767 1111 • Email: info@polyflor.com • www.polyflor.com

© At the time of writing and publication of sheet, all the information is specified correctly. The company reserves the right to change the specifications of this product at any time without prior notice to third parties.

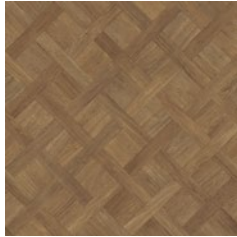
V2

Architex PUR

RANGE SHADES



Oxford Basket Weave 3407
plank size in sheet: 56-120 x 120-297mm
LRV 31



Warwick Basket Weave 3408
plank size in sheet: 56-120 x 120-297mm
LRV 19



Lake House Oak 3403
plank size in sheet: 200 x 1500mm
LRV 33



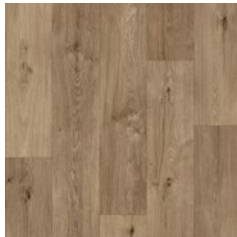
Dorchester Oak 3406
plank size in sheet: 200 x 1000mm
LRV 30



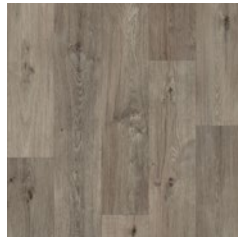
Rose Hill Oak 3401
plank size in sheet: 200 x 1500mm
LRV 38



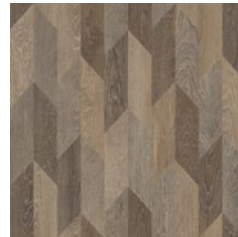
Bowery Oak 3405
plank size in sheet: 200 x 1000mm
LRV 32



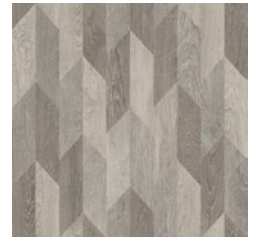
Alden Oak 3402
plank size in sheet: 200 x 1500mm
LRV 25



Marlborough Oak 3404
plank size in sheet: 200 x 1500mm
LRV 24



Tan Bowman Oak 3409
plank size in sheet: 100 x 333mm
LRV 23



Grey Bowman Oak 3411
plank size in sheet: 100 x 333mm
LRV 35



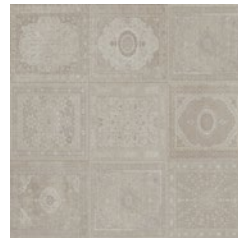
Portland Cement 3416
LRV 46



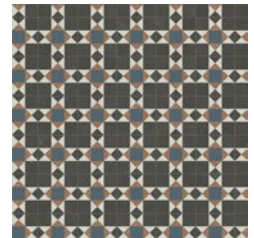
Hudson Cement 3417
LRV 21



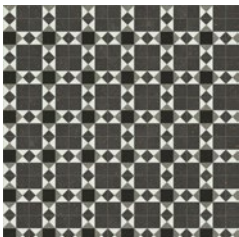
Fresh Persian Loom 3412
plank size in sheet: 330 x 330mm
LRV 55



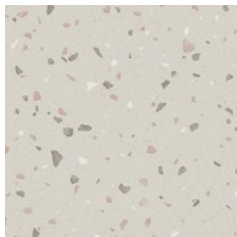
Rich Persian Loom 3413
plank size in sheet: 330 x 330mm
LRV 41



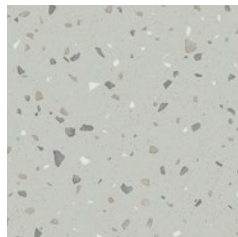
Parlour Tile 3414
LRV 26*



Heritage Tile 3415
LRV 23*



Vittoria Terrazzo 3418
LRV 52



Fresco Terrazzo 3419
LRV 49

LRV - Light Reflectance Value

*LRV may vary due to high shade variation.

Polyflor Ltd. Head Office

PO Box 3, Radcliffe New Road, Whitefield, Manchester, M45 7NR • Tel: +44 (0) 161 767 1111 • Email: info@polyflor.com • www.polyflor.com

© At the time of writing and publication of sheet, all the information is specified correctly. The company reserves the right to change the specifications of this product at any time without prior notice to third parties.

V2